

Stepney Grove, Bridlington East Riding of Yorkshire - Supported Living Service



Opening Soon in 2015

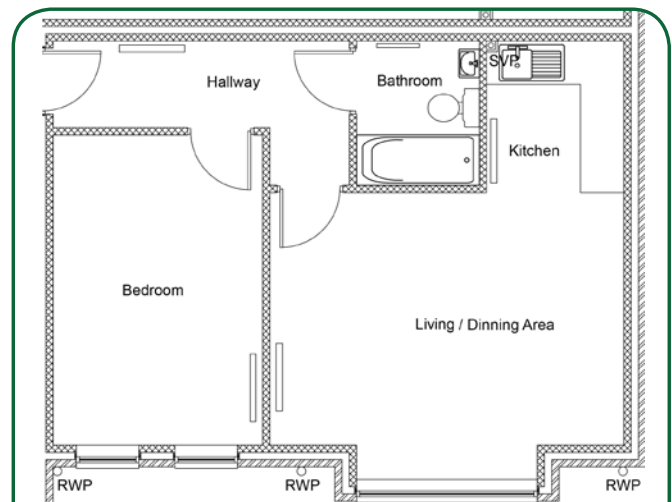
Working in partnership with Bespoke Supportive Tenancies (BeST), East Riding of Yorkshire County Council and East Riding of Yorkshire Clinical Commissioning Group, Eden Futures will bring to the sector ten single-person apartments in Bridlington.

Individuals using this innovative service will be paying for the support through their personal social care and health budgets.

Accommodation

Ground floor flats are available with the first and second floors accessible via wide stairwells with easy tread stairs.

The flats are spacious, with a specialist fit-out and expert maintenance to ensure safe and high quality environments. A range of support inputs and equipment can be accommodated. Secure parking is available.



Example apartment layout

Location

Situated in the pleasant seaside town of Bridlington with plenty of amenities and local shops close by, as well as great transport links to Hull and Scarborough.

Working in partnership with

Inspiring Independence, Enhancing Lives

Single-person apartments

Each one-bedroomed, self-contained flat has its own entrance, good sized living area with large open plan lounge, dining and kitchen area. They are suitable for people with learning difficulties and / or mental health support needs. The project has the benefit of an additional staffing area to enable us to provide an umbrella of support that includes a waking-night as an integral part of the service option.

Person-centred service

The Bridlington staff team will be supported by our **Clinical Support Team** to ensure that all new service users have a positive transition into to their new home. The clinical support team promote person-centred service delivery and take the lead on compliance issues and joint working with other agencies.

More than a home.

We are committed to promoting well-being as defined in the Care Act 2014 and supporting people to achieve:

- Physical & mental health and emotional well-being
- High quality and suitable living accommodation
- Participation in work, education, training or recreation
- Meaningful contribution to society
- Social and economic well-being
- Family and personal relationships
- Personal dignity
- Control of their day-to-day life
- Protection from abuse and neglect



To make a referral please contact:

East Riding of Yorkshire County Council's Adult Services

Please ring the customer services central number: 01482 393939. Customer Services will pass your details on to the Single Intake Duty Team, someone from the team will phone you back.

For more information or to arrange a visit please contact:

David Whittock (Eden Futures)

Tel: 07759 041126

david.whittock@edenfutures.org

Eden Futures Head Office

Tel: 01636 676054

info@edenfutures.org

Join us on
social media



www.edenfutures.org