

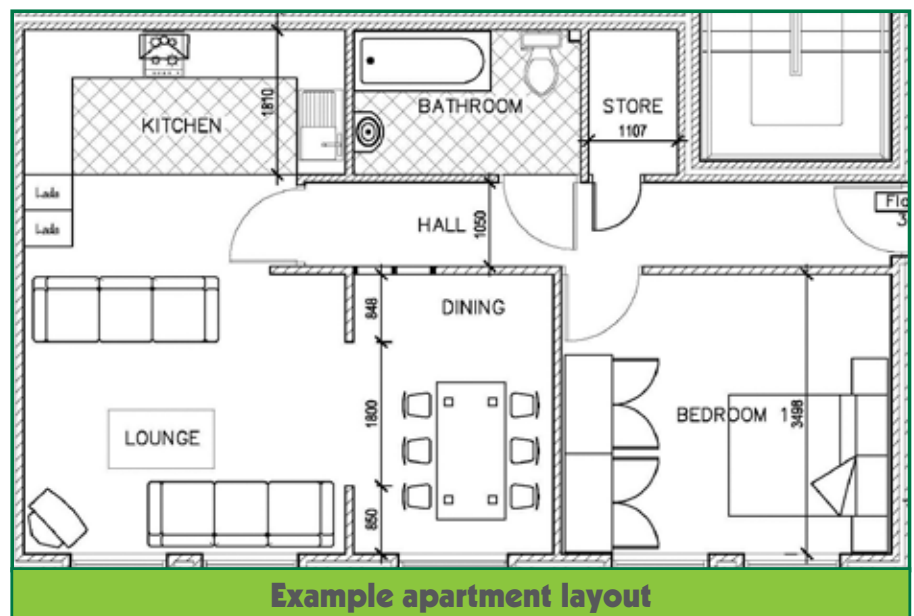
Bluebell Court, Derbyshire - Supported Living Service



10 Self-contained apartments

Each single-bedroom, self-contained apartment has its own entrance, good sized living area with large open-plan lounge, dining and kitchen area. They are suitable for people with learning difficulties and / or mental health support needs. The building has the benefit of an additional staffing area to enable us to provide an umbrella of support that includes a waking-night as an integral part of the service option.

Ground floor flats are available and the first and second floors are accessed via wide stairwells with easy-tread stairs. The flats are spacious, with a specialist fit-out and expert maintenance to ensure safe and high quality environments. A range of support inputs and equipment can be accommodated.



Location

They are sited in a residential area near to local shops and with great transport links. They are an ideal supported living option for those who want to live more independently.

They are situated five miles from the M1 junction 26. Ample off road parking is available.

Example Apartment Specification

Includes: security entry phone system, ample power points, central heating, fully carpeted (except Kitchen and Bathroom), sealed-unit double-glazed windows throughout.



Open-plan L-Shape Lounge with Kitchen and Dining area (6.5m X 6.5m at widest points)

- Large open-plan lounge and dining area
- Fully carpeted
- Ample power points
- TV aerial and Phone point



Kitchen

- Vinyl floor and laminated worktops
- Contrasting eye and base-level units
- Stainless steel single bowl drain unit
- Free-standing electric cooker with built-in extractor fan
- Washer/dryer and fridge freezer



Bedroom (2.6m x 3.4m)

- Large room
- Carpeted
- Ample power points

Bathroom (2.6m x 1.5m)

- Panel enclosed bath with mixer taps
- Electric shower over bath
- Pedestal hand wash basin
- Fully tiled around bath and shower
- Toilet and extractor fan

Clinical Support Team

The team work in collaboration with the Heanor support team and the wider MDT to ensure all new service users have a positive transition into their new home. They promote a person-centred service delivery from the point of referral, and take the lead on issues such as CTO compliance. They establish and maintain relationships with other agencies and the wider circle of support in order to promote joint working to enable positive outcomes for people.



For more information or to arrange a visit please call:

Katherine Newton
Tel: 07967 267748
katherine.newton@edenfutures.org

Derbyshire Office
Tel: 01773 530675
derbyshire@edenfutures.org

Join us on
social media



www.edenfutures.org